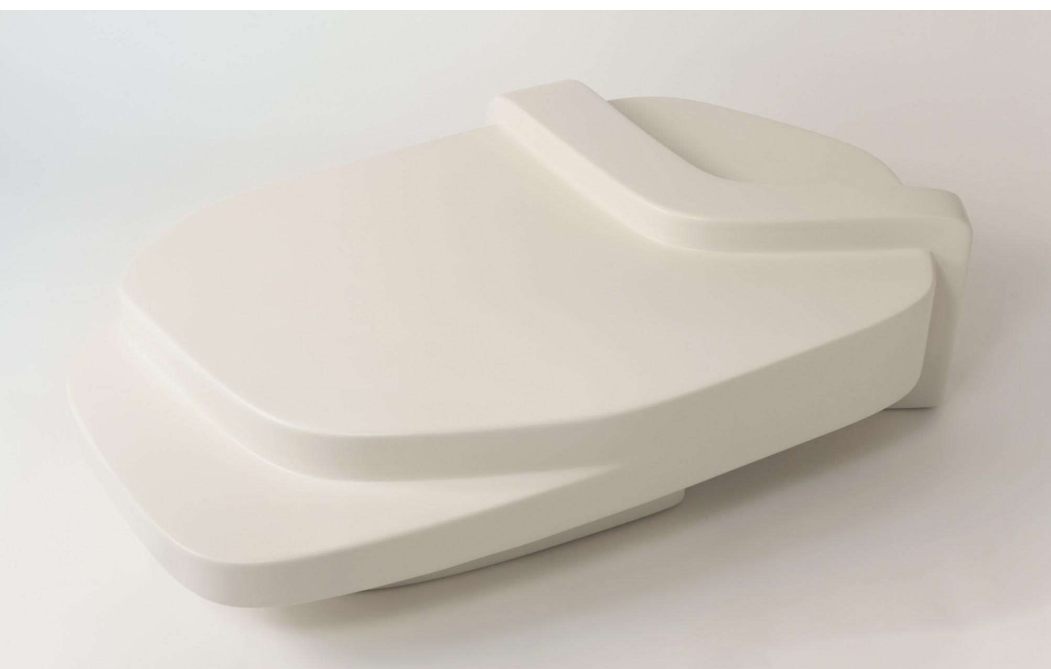


SIMONE FANCIULLACCI

EDIZIONE LIMITATA



RODI V1 LOW TABLE

RESIN COATED POLYSTYRENE

L/P/H (CM): 119/79/30

W/D/H (IN): 46.9/31.1/11.8

LEAD TIME 8 WEEKS

LIMITED EDITION 150

SIGNED, SERIAL NUMBER AND CERTIFICATE OF AUTHENTICITY

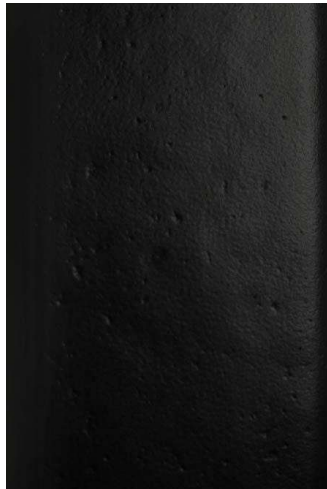
IMAGES DOWNLOAD: <https://www.simonefanciullacci.com/collection/EL/Rodi.zip>

SIMONE FANCIULLACCI

EDIZIONE LIMITATA



RESIN COATED POLYSTYRENE -
OFF WHITE PAINTED



RESIN COATED POLYSTYRENE -
BLACK PAINTED



RESIN COATED POLYSTYRENE -
CHROME PAINTED

RESIN COATED POLYSTYRENE - AVAILABLE MATERIALS AND FINISHINGS

THE RESIN COATING CAN BE GIVEN A MATT OR GLOSSY FINISHING AND CAN BE PAINTED IN ANY COLOUR FROM THE RAL PALETTE.

SPECIAL PAINTS AND FINISHES - SUCH AS CHROME PAINT - CAN BE APPLIED ON THE RESIN COATING WITH A RESULTING INCREASE IN THE FINAL OBJECT'S PRICE.

AN ADDITIONAL COATING CAN BE APPLIED TO MAKE THE OBJECT SUITABLE FOR OUTDOOR USE.